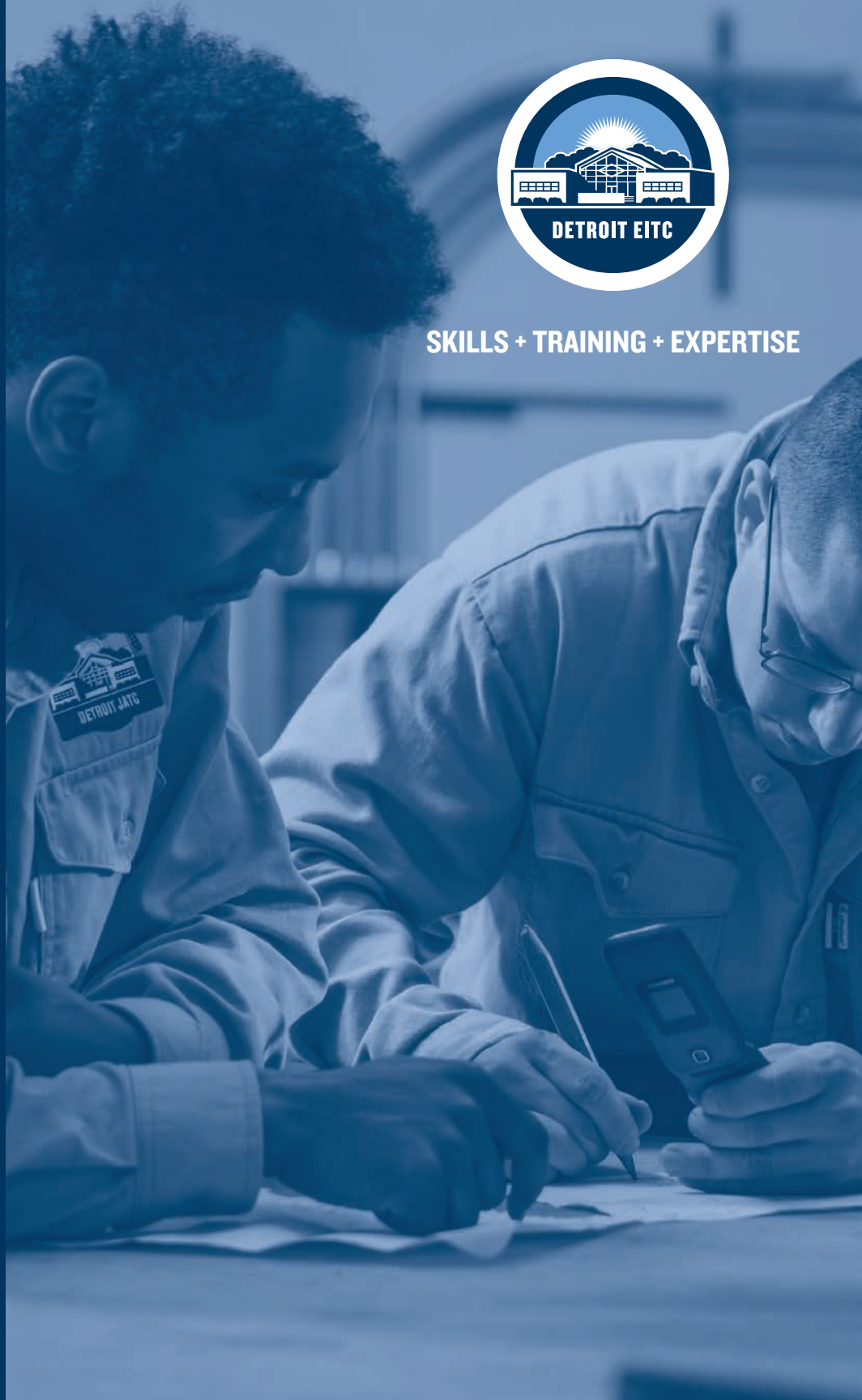


# THE DETROIT ELECTRICAL INDUSTRY TRAINING CENTER



**SKILLS + TRAINING + EXPERTISE**



Nothing but **HEAVY DUTY**.  
**DESIGNED TO A  
HIGHER STANDARD**



**FLUKE**



## OUR VISION

QUITE SIMPLY, WE'VE BEEN EDUCATING THE BEST ELECTRICIANS AND THE BEST ELECTRICAL CONTRACTORS IN THE WORLD FOR OVER 100 YEARS. WE BELIEVE THAT TECHNICAL AND HANDS-ON INSTRUCTION COMBINED WITH A STRONG WORK ETHIC THAT STRESSES PRODUCTIVITY AND RESPONSIBILITY, PRODUCES A MORE SUCCESSFUL INDIVIDUAL AND A MORE SUCCESSFUL ELECTRICAL INDUSTRY.

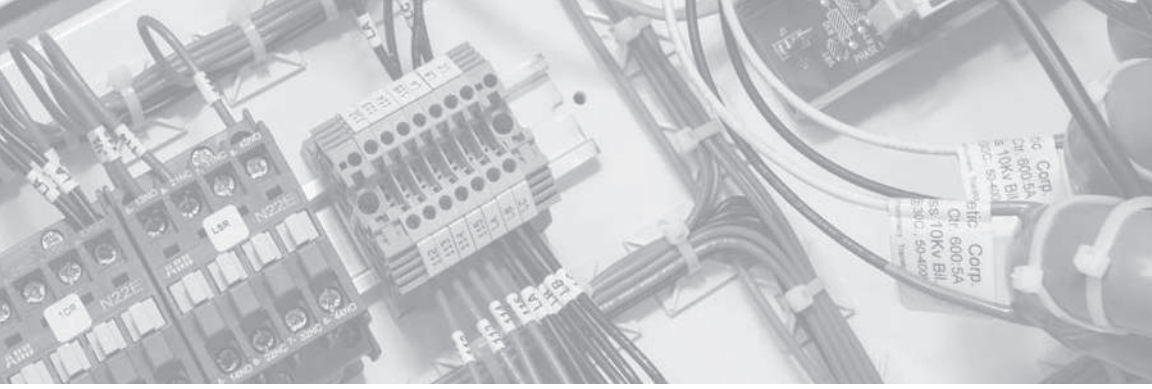
## WHAT WE DO

**Apprenticeships:** Hands-on-learning + on-the-job technical training.

**Continuing Education:** Advanced specialty training for IBEW-NECA members.

**Demonstration Center:** Expertise combined with advanced technology, installations + demos.





# APPRENTICESHIPS

**JOB PLACEMENT + WAGES WEEK ONE**

**HANDS-ON INSTRUCTION MEETS  
CLASSROOM EDUCATION**

**STRUCTURED EDUCATION + EXPERIENCE  
LEADS TO LONG TERM CAREERS**





**Start the Detroit EITC apprenticeship program and be on-the-job, earning wages in week one. Sounds too good to be true doesn't it? Well, it's true.** The Detroit EITC's combination of job placement, hands-on learning and technical classroom instruction offers a unique opportunity for motivated, committed, talented individuals seeking a career for life in the electrical trade.

## HOW WE DO IT

Similar to a full-ride scholarship for college, we support the cost of the education in our three and five year programs through a joint partnership with the IBEW Local 58 and the electrical contractors represented by Southeastern Michigan Chapter NECA so that our apprentices graduate debt-free, with wages, healthcare and retirement benefits.

## JOB PLACEMENT

We take applications from all interested individuals in our programs. The key to our program is early job placement. In order to do that, we need to have jobs available for apprentices before we enroll them into our program. We don't enroll everyone who applies. We balance enrollment with job availability for qualified candidates who have successfully completed the application process, aptitude test and interview. Once enrolled, our apprentices are on-the-job 90% of their apprenticeship.

## PROGRAMS

**THE DETROIT EITC OFFERS THREE FEDERALLY REGISTERED APPRENTICESHIP PROGRAMS. ALL THREE PROGRAMS ARE SUBSIDIZED BY THE IBEW LOCAL 58 AND SMCNECA JOINT TRAINING FUND. TUITION IS CURRENTLY AROUND \$100 PER QUARTER AND OVERALL COSTS FOR THE PROGRAM ARE NOMINAL.**

The majority of the program is on-the-job training where apprentices earn wages and benefits which increase with skill attainment as the program progresses. Students also attend one full day of school every two weeks at the Detroit EITC.



## INSIDE CONSTRUCTION WIREMAN

Inside Construction Wiremen build the landmarks, arenas, office buildings, retail stores, malls, airports, iconic buildings and a variety of other commercial and industrial facilities across the region.

**\$19.08**

starting  
apprentice wage

**\$31.79**

ending  
apprentice wage

**\$42.39**

post-graduation  
starting wage

## SOUND, COMMUNICATION & DATA MANAGEMENT

The world runs on information and technology. Sound, Communication & Data Management Installer-Technicians provide the skilled support needed to install, maintain, troubleshoot and expand those critical systems.

**\$14.57**

starting  
apprentice wage

**\$21.85**

ending  
apprentice wage

**\$29.13**

post-graduation  
starting installer wage

**\$36.21**

post-graduation  
starting technician wage

## RESIDENTIAL WIREMAN

Technology and electricity drive the home, condo or multi-unit apartment complex with increasingly complex and integrated systems.

**\$12.65**

starting  
apprentice wage

**\$18.98**

ending  
apprentice wage

**\$25.30**

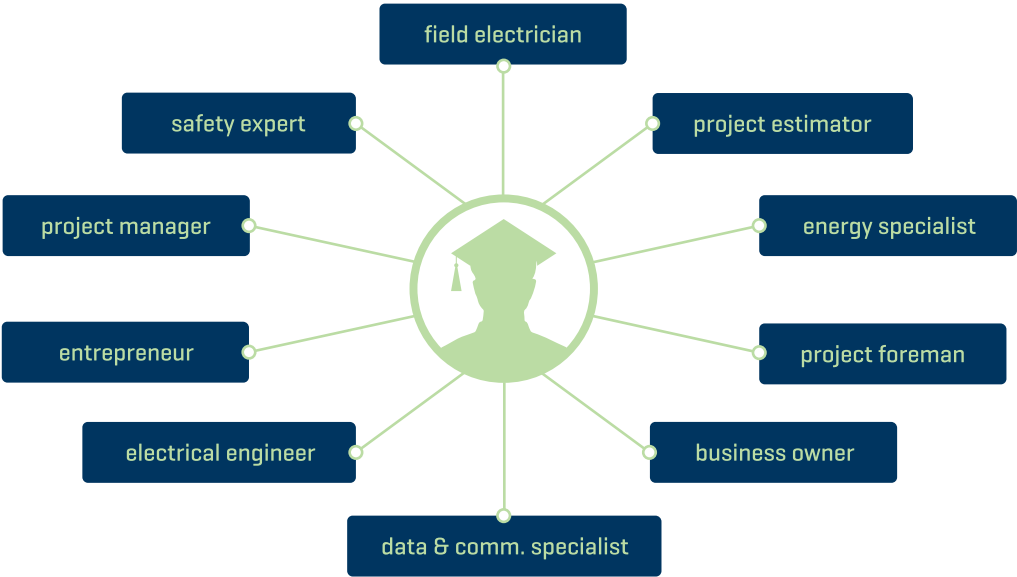
post-graduation  
starting wage

These wages DO NOT reflect healthcare and retirement benefits, which members receive in addition to these wages. Please go to [DETROITEITC.org](http://DETROITEITC.org) for the most current wage rates and information.



# CAREERS

The Detroit EITC apprenticeship provides a strong foundation of hands-on, on-the-job and technical classroom education. This multi-faceted method provides a jump start for a successful career as an electrician or within a related field.



Graduates continue as highly successful electricians in the field, move into leadership or management roles in the field or office and many continue their education to become specialists and engineers. These are just a few of the many construction related careers that a graduate might pursue after the electrical apprenticeship.

98%

OF OUR CURRENT CONTRACTORS WHO OWN MANY OF THE LARGEST AND MOST RESPECTED ELECTRICAL FIRMS IN THE REGION BEGAN AS APPRENTICES IN OUR PROGRAM.



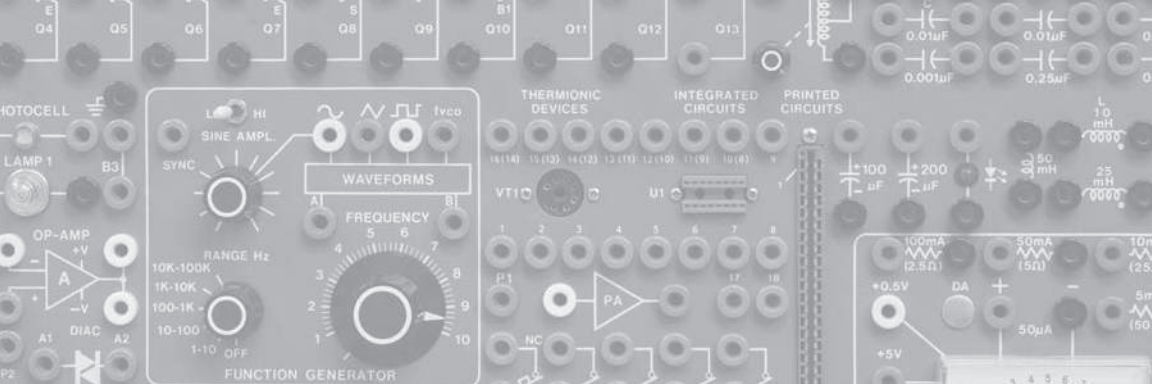
## HOW TO APPLY

- 1 You may apply online during the first business week of each month. Online applications are only taken within this window. For a list of dates, follow the link [detroitc.org/events/](http://detroitc.org/events/).
- 2 Have high school mail official copy of transcripts directly to the Training Center within 30 working days.
- 3 If you meet the qualifications you will be notified to report for testing. If you receive a test notice there will be a \$20.00 processing fee payable at the time of your test date.
- 4 If your test results are satisfactory, you will be notified for an interview.
- 5 If you are not notified within 6 months of your test date for an interview, you will need to re-apply and re-test to be considered for an interview.

***Please visit [detroitc.org](http://detroitc.org) for more information.***

Applicants must be 18 years of age, must have successfully completed one year of high school algebra, have a high school diploma or a GED. Classes are started as manpower demands dictate and vary based on economic conditions in the market at any given time.





# CONTINUING EDUCATION

THE ADVANCEMENT AND EXPANSION OF  
TECHNOLOGY WITHIN TODAY'S FACILITIES  
REQUIRES A PRO-ACTIVE AND ON-GOING  
APPROACH TO CONTINUING EDUCATION.





The Detroit EITC provides continuing education for the 4,700 members of the International Brotherhood of Electrical Workers, Local 58 and the signatory contractors represented by Southeastern Michigan Chapter NECA.

## OUR GOAL

The goal of our continuing education programs for members is to provide advanced specialty training to meet the increasing demands and complexity of the electrical construction market across all sectors.

## BE PREPARED

Today's marketplace demands proven and verifiable skills like those offered through the Continuing Education programs at the Detroit EITC.

## ADVANCED TRAINING

Our programs are developed nationally and regionally in partnership with industry, employers, technology providers and industry experts. Continuing Ed course work is a combination of technical classroom learning with hands-on lab instruction. Often courses have 3rd party credentialing which includes a proficiency exam and verifiable skill comprehension.

## CERTIFICATIONS

**FOA**  
**MALCTP**  
**EVITP**  
**Instrumentation**

**Fire Alarm**  
**BICSI**  
**NICET**  
**OSHA 30**

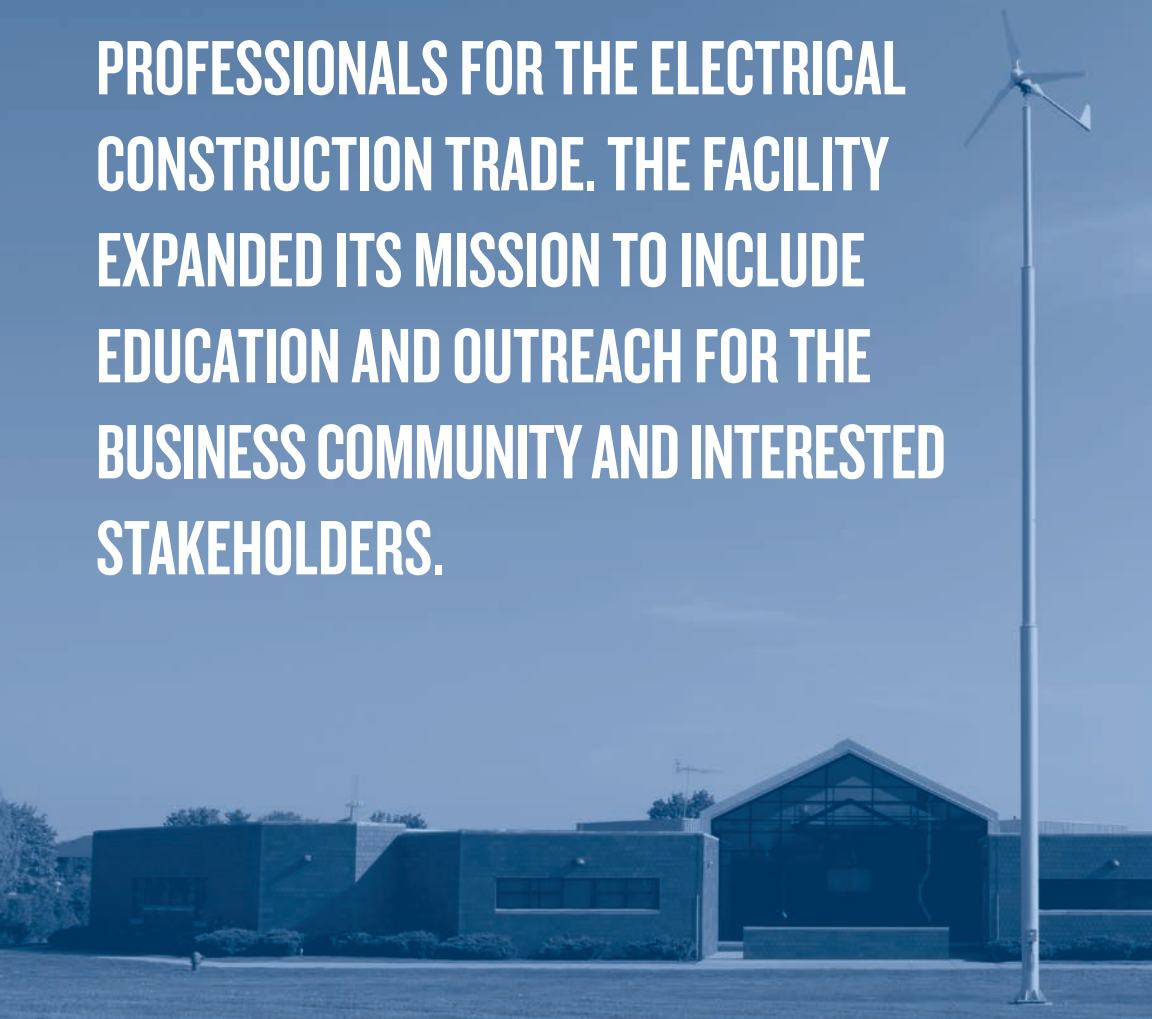
**OSHA 10**  
**DTE Storm Watch Recovery**





# DEMONSTRATION CENTER

**DETROIT EITC SERVES TO EDUCATE PROFESSIONALS FOR THE ELECTRICAL CONSTRUCTION TRADE. THE FACILITY EXPANDED ITS MISSION TO INCLUDE EDUCATION AND OUTREACH FOR THE BUSINESS COMMUNITY AND INTERESTED STAKEHOLDERS.**



# OUR GOAL

As an Energy Demonstration Center, the facility opens its doors and convenes industry business and thought leaders for conferences, trade shows, product demos, tours and robust dialogue. As electrical industry experts, the business and instructors at the facility seek to drive the highest standards for installation best practices, quality products, safety standards and education that assist stakeholders in making sound decisions around electrical technology and installation.

# TRAINING PARTNERS

The Detroit EITC is proud to collaborate with these fine Training Partners nationally through the IBEW-NECA Electrical Training Alliance and locally in Southeastern Michigan. Training Partners provide valuable financial support and in-kind donations of materials, tools and subject matter expertise for both Apprentices and Journeymen.

**IBEW-NECA Electrical  
Training Alliance**

**Coyne First Aid**

**Bussman by Eaton**

**Lincoln Electric Company**

**Michigan Advanced Lighting  
Controls Training Program (MALCTP)**

**Prysmian Power Cables & Systems**

**Southeastern Michigan Chapter NECA**

**The Fiber Optic Association**

**National Fire Protection  
Association (NFPA)**

**Electric Vehicle Infrastructure Training  
Program (EVITP)**

**American Technical Publishers**

**Harger Lightning & Grounding**

**IBEW Local 58**

**Salisbury by Honeywell**

**FireLite Alarms by Honeywell**

**Underwriters Laboratory**

**Axis Communications**

**Hubbell Power Systems**

**Erico**

**3M Company**

**UL**

**Lutron**

**Graybar**

**Union Line**

**Fluke Corporation**

**Ideal Industries**

**Klein Tools**

**Legrand**

**Milwaukee Tool**

**Greenlee**

**Southwire Company**

**Thomas & Betts**

**TE Connectivity**

**Westex by Milliken**





## **PARTNERSHIP**

**THE INTERNATIONAL BROTHERHOOD OF ELECTRICAL WORKERS, LOCAL 58 REPRESENTS 4,700 HIGHLY SKILLED JOURNEYMEN ELECTRICIANS IN SOUTHEASTERN MICHIGAN. THE IBEW WORKFORCE PROVIDES THE MOST PRODUCTIVE, EFFICIENT, PROFICIENT ELECTRICIANS AVAILABLE IN THE MARKET-PLACE TODAY.**

# OUR CONTRACTORS

**\*Bold indicates a NECA Contractor**

A. F. Smith Electric  
ABM Building Solutions, LLC  
Advantage Electric and Controls  
All Area Mechanical  
All City Electric  
Alpha Electrical & Engineering  
B&C Ten Air HVAC Systems  
B&M Electrical Contracting  
Bailey Telecommunications  
**BASS-Building Automated Systems & Services**  
**Bayview Electric Company, LLC**  
**Bluestone Communications, Inc.**  
Camtronics Communications  
CEI Electric Co.  
**Center Line Technologies, Inc.**  
**Centerline Electric Company**  
Compass Tech Solutions, LLC  
Conti Electric  
Crook Electric  
Current Electrical System  
Current Solutions  
**D. F. Best**  
**Danboise Mechanical, Inc.**  
Dan's Excavating, Inc.  
DES Electric, LLC  
**Detroit Power Systems, LLC**  
**Doublejack Electric, Inc.**  
Ecker Mechanical Contractors, Inc.  
Edgewood Electric, LLC  
Electric Motor & Contracting  
**Electrical Insights**  
Electrical Power & Design  
Electronic Security Systems  
Empire Products LLC  
Etgar Corporation, Inc.  
**Expo Technologies, LLC**  
E-Z Electric  
**Ferndale Electric**  
**Fontanesi & Kann**  
**Gemellaro Systems Integration**  
Genco LLC  
GSI Electrical Services  
**Guardian Equipment**  
Hall Engineering

Halligan Electric Inc.  
**Hatzel & Buehler Electric**  
High Tech, AV  
**High Voltage Maintenance Corp**  
**Highgate Electric**  
Holly Construction Co.  
HQ Electric, Inc.  
Hunt Electric Corp  
Huron Valley Elec. Inc.  
Identify Inc.  
**In2gro Technologies, LLC**  
**Industrial Electric Company**  
Innovated Energy Controls, Inc.  
**J&J Electric, Inc.**  
J. Ranck Electric, Inc.  
**JMC Electrical Contractor**  
K & A Signs, Inc.  
K & E Electric of Michigan  
KEI Kereluk Electric dba Kei  
**KLA Laboratories, Inc.**  
Labelle Electrical Services  
Lake Erie Electric of Michigan  
Lake Pointe Electrical, LLC  
Lakeshore Global Corporation  
Lineside, LLC  
Markee Electric  
Master Electric, Inc.  
Mattic  
**McSweeney Electric**  
Metro Environmental, Inc.  
**Micro Electric**  
**Motor City Electric**  
**Motor City Electric & Technologies**  
**Munro Electric**  
Mutual Electric  
Newkirk Electric  
**NU-Star Technologies**  
**Omega Electric**  
Paradigm 2000, Inc.  
Pono Electric, Inc.  
Power Design Electric LLC  
Powerlink Electrical, LLC  
Precision Electrical Contracting  
R Simon Electric, LLC  
R. K. Services S&C

Rauhorn Electric  
Renton Electric Company  
Resnick Residential  
**Rotor Electric Co.**  
Sachs Electric  
Sadler Electric  
**Saturn Electric, Inc.**  
Service Control Inc.  
Shambaugh & Son  
**Shaw Electric**  
**Shaw Systems & Integration**  
**Slifco Electric**  
**Smith Brothers Electric**  
Sound Engineering  
SoundCom Michigan Corp  
**Specialized Power Services**  
State Line Construction & Maint.  
Stellar Electric  
Stephenson Electric  
**Streamline Electric, Inc.**  
Superior Electric  
**Synergy System Solutions**  
**Telecom Technicians**  
Tered, Inc. dba Ott Electric  
The Laibe Electric Co.  
The Oscar W. Larson NMA Co.  
The Stanley Works  
**The State Group Industrial**  
**The Talbot Corporation**  
Three Phases Elec. Tech  
Total Electric  
**Triangle Electric**  
**Utilities Instrumentation**  
Wade Trim Operation Services  
Walker Electric Inc.  
Walt's Electric  
Williams Electric & Telecom LLC  
Wiltec Technologies  
Wiltse Electric Services Inc.  
**Wolverine Fire Protection Co.**  
Woodward Electrical Services LLC

**DETROITEITC.ORG**

2277 E 11 Mile Rd Suite 1  
Warren, MI 48092

**Phone** 586-751-6600

**Fax** 586-751-6699

